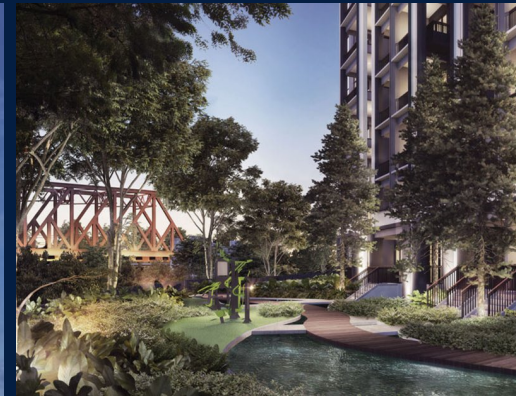


FOR SALE

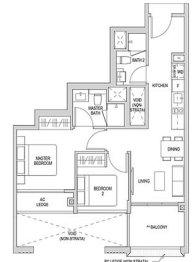
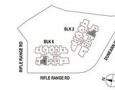
RESIDENTIAL - CONDOMINIUM 689SQFT (64SQM) / CALL FOR PRICE!

+65 9450 9683



2 - Bedroom

TYPE B1
64 SQM / 689 SQFT
Block 6 #03-21 to #07-21



RESIDENTIAL - CONDOMINIUM

2, 4, 6 RIFLE RANGE ROAD, CLEMENTI PARK, UPPER
BUKIT TIMAH, SINGAPORE 588373

- LISTING ID: SGLD16136461
- TENURE: LEASEHOLD 99
- TITLE: N/A
- SIZE BUILT-UP: 689SQFT (64SQM)
- SIZE LAND: 2.121AC (0.858HA)
- NO. OF FLOORS: 8
- FLOOR/LEVEL: N/A - N/A
- BED ROOMS: 2
- BATH ROOMS: 2
- MAIDS ROOMS: N/A
- PARKING SPACES: N/A
- LAYOUT TYPE: OTHER
- FACING: N/A
- VIEWING: N/A
- SELLING PRICE: **CALL FOR PRICE!**
- COMPLETION YEAR: 2024
- CONDITION: ORIGINAL CONDITION
- FURNISHING: PARTIALLY FURNISHED
- LISTING DATE: JUL 09, 2019

MAYFAIR MODERN

Condominium for Sale: Partially furnished. 2 bedroom, 2 bathroom. Completed in 2024, this unit is in original condition. Tenure: Leasehold 99. Located in Singapore's district D21 near Clementi Park, Upper Bukit Timah in the area Central West (Central region).

INTERIOR FACILITIES

- Air-Conditioning
- Fiber-Internet
- Balcony
- Internet Connection

OTHER INTERIOR FEATURES

- Cooker Hob/Hood
- Dryer
- Dishwasher
- Fridge

EXTERIOR FACILITIES

- 24 Hours Security
- Covered Car Park
- Clubhouse
- Function Room

VISIT THIS PROPERTY AT: <https://www.aseanpropertyweb.com/property/SGLD16136461>

AMY NG - HUTTONS ASIA PTE LTD

3 Bishan Place #05-01 CPF Bishan Building
D20, 579838, Singapore

+65 9450 9683
WhatsApp Me

eliteproperty1388@gmail.com

<https://www.aseanpropertyweb.com>



Scan QR Code

L3008899K
R008078D

Huttons® Call for Viewing
The Agency of Choice +65-94509683